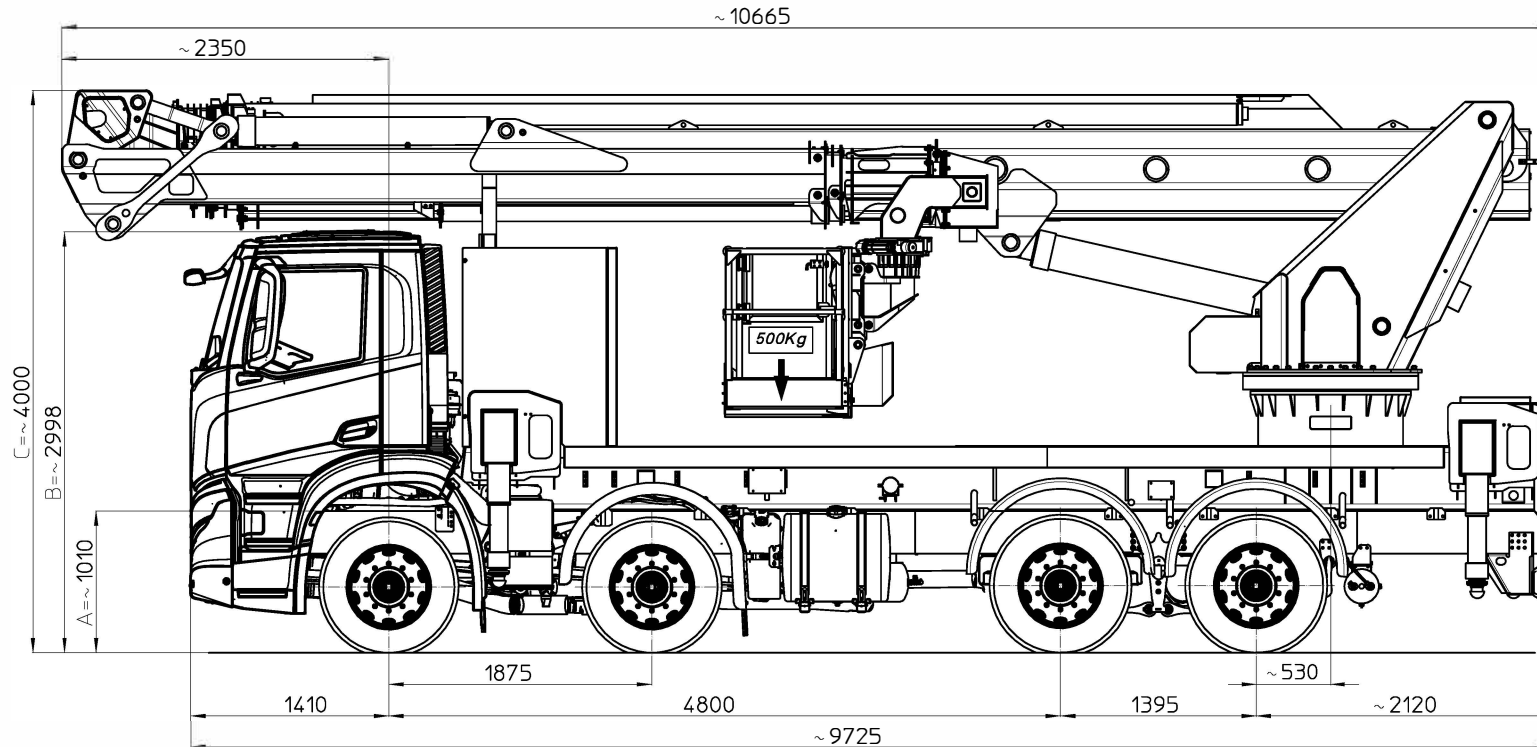


# MULTITEL MJ450

Iveco X-WAY AD350X48Y/PS ON 8x2x6 Euro6

Codi ec			1D80714			
Ente	Rev.	Descrizione	Data	Dis.	Contr.	Ap.AQ
MRK	0	EMISSIONE	21/12/21	F.Z.	R.F.	F.F.
INGOMBRO - SCHEDA 54/1 - Rev. 0 - 15/12/00						



## F.I.M. NOLEGGI

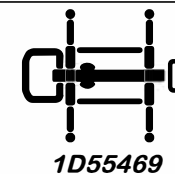
Piattaforma con intercambiabilità:  
 - cesto EXT / cesto PARAPETTO  
 ABBATTIBILE;  
 - cambio cesto / montaggio VERRICELLO;

VEHICLE DATA		
axle weight	[kg]	
	front	rear
unladen	6450	2870
max permissible	18000	20000

**32,00 TON**

**RICHIEDERE AUTOCARRO CON:**  
 - spostamento lato destro tra 1° e 2° asse del gruppo batterie e bombole; arretrare tutto tra 2° e 3° asse (riferimento telaio Iveco num. WJM163LSX0C485258) per lasciare spazio al passaggio stabilizzatore anteriore;  
 - rimozione optional 00630 e 72522;

### STABILIZATION DRAWING



working mode	DIAGRAMS WORKING AREA	
standard basket 120kg   300kg   500kg	fully extended 1D60475	vehicle outline 1D63019
special basket 450kg	fully extended 1D63010	vehicle outline 1D63018
700kg	fully extended 1D60474	vehicle outline 1D79667
1300kg	fully extended 1D79668	minimal extension 1D79669

I - Le quote riportate in disegno sono indicative; possono subire variazioni in base alle dimensioni dell'autocarro.

F - Les cotes indiquée dans le dessin sont indicatives et peuvent subir des variations selon aux dimensions du porteur.

E - The dimensions shown in the drawing are an indication and may undergo changes related to the truck sizes.

D - Die in der Zeichnung angegebene Maße sind Richtwerte und können je nach Fahrzeuggröße variieren.

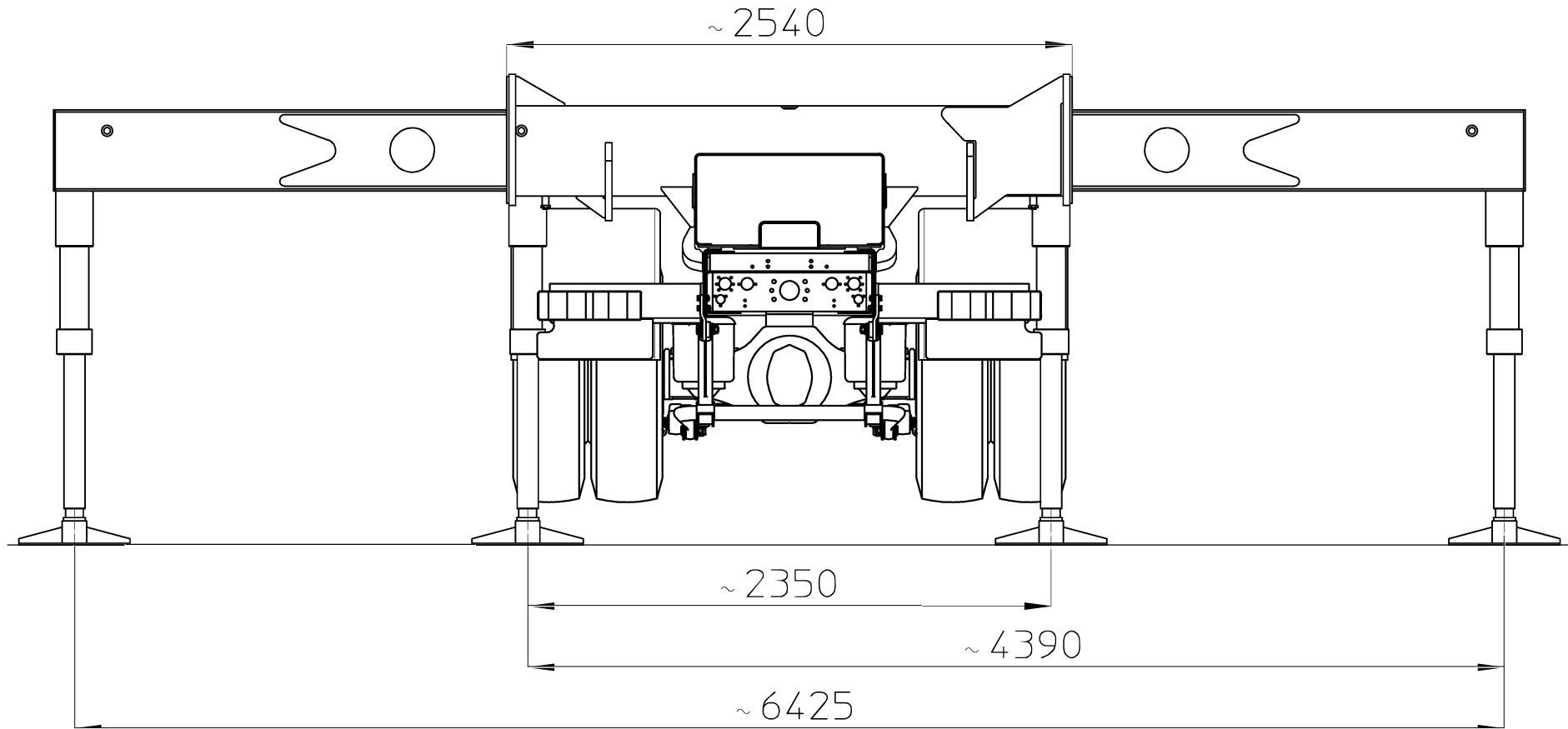
# MULTITEL MJ450

Ente	Rev.	Descrizione	Data	Dis.	Contr.	Ap.AQ
MRK	0	EMISSIONE	08/01/16	L.B.		
INGOMBRO - SCHEDA 54/1 - Rev. 0 - 15/12/00						

STABILIZZAZIONE PER AUTOCARRO CON PTT <= 32 TON.  
E LARGHEZZA MASSIMA 2540mm.  
STABILISATION POUR VEHICULES PTAC <= 32 TON.  
ET LARGEUR MAXI 2540mm.  
TRUCK STABILISATION FOR GVW <= 32 TON.  
AND MAX WIDTH 2540mm.  
ABSTUTZUNG FUR FAHRZEUG MIT GES. GEWICHT <= 32 TON.  
UND MAX. BREITE 2540mm.

D55469

**F.I.M. NOLEGGI**



# MULTITEL MJ450

Ente	Rev.	Descrizione	Data	Dis.	Contr.	Ap.AQ
MRK	0	EMISSIONE	13/06/17	L.B.		
DIAGRAMMA - SCHEDA 54/2 - Rev. 0 - 15/12/00						

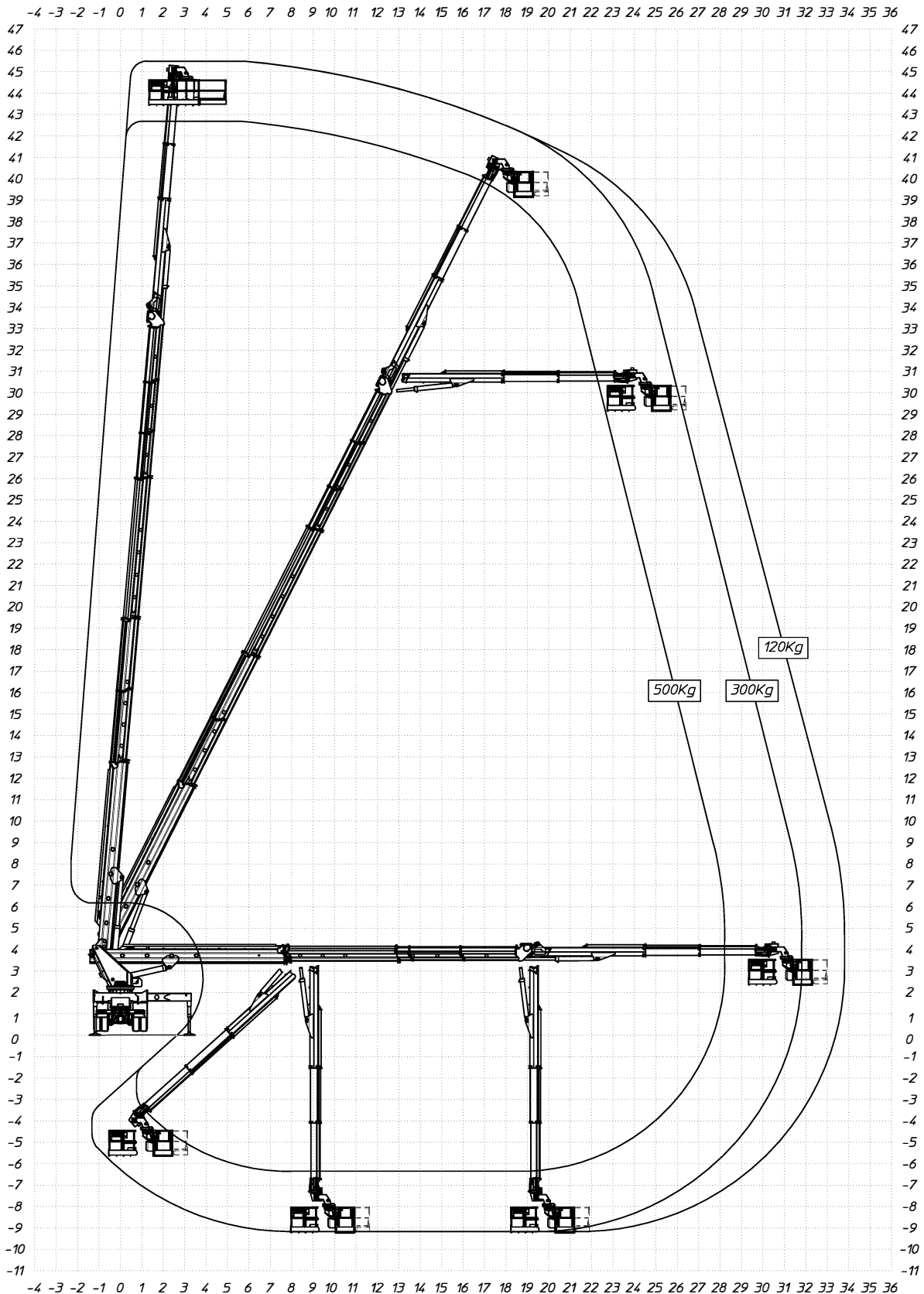
## F.I.M. NOLEGGI

D60475

P.T.T.=32000 kg  
 G.V.W.=32000 kg  
 P.T.A.C.=32000 kg  
 GES. GEWICHT=32000 kg

STABILIZZATORI COMPLETAMENTE ESTESI  
 FULLY EXTENDED STABILIZERS  
 STABILISATEURS COMPLETEMENT ETENDUS  
 GANZ AUSGEFAHRENE STÜTZEN

	500Kg	300Kg	120Kg
SBRACCIO DI LAVORO	28,2 m ±5%	31,8 m ±5%	33,8 m ±5%
WORKING OUTREACH	28,2 m ±5%	31,8 m ±5%	33,8 m ±5%
DEPORT DE TRAVAIL	28,2 m ±5%	31,8 m ±5%	33,8 m ±5%
SEITLICHE REICHWEITE	28,2 m ±5%	31,8 m ±5%	33,8 m ±5%



# MULTITEL MJ450

Ente	Rev.	Descrizione	Data	Dis.	Contr.	Ap.AQ
MRK	0	EMISSIONE	06/04/18	R.F.		
DIAGRAMMA - SCHEDA 54/2 - Rev. 0 - 15/12/00						

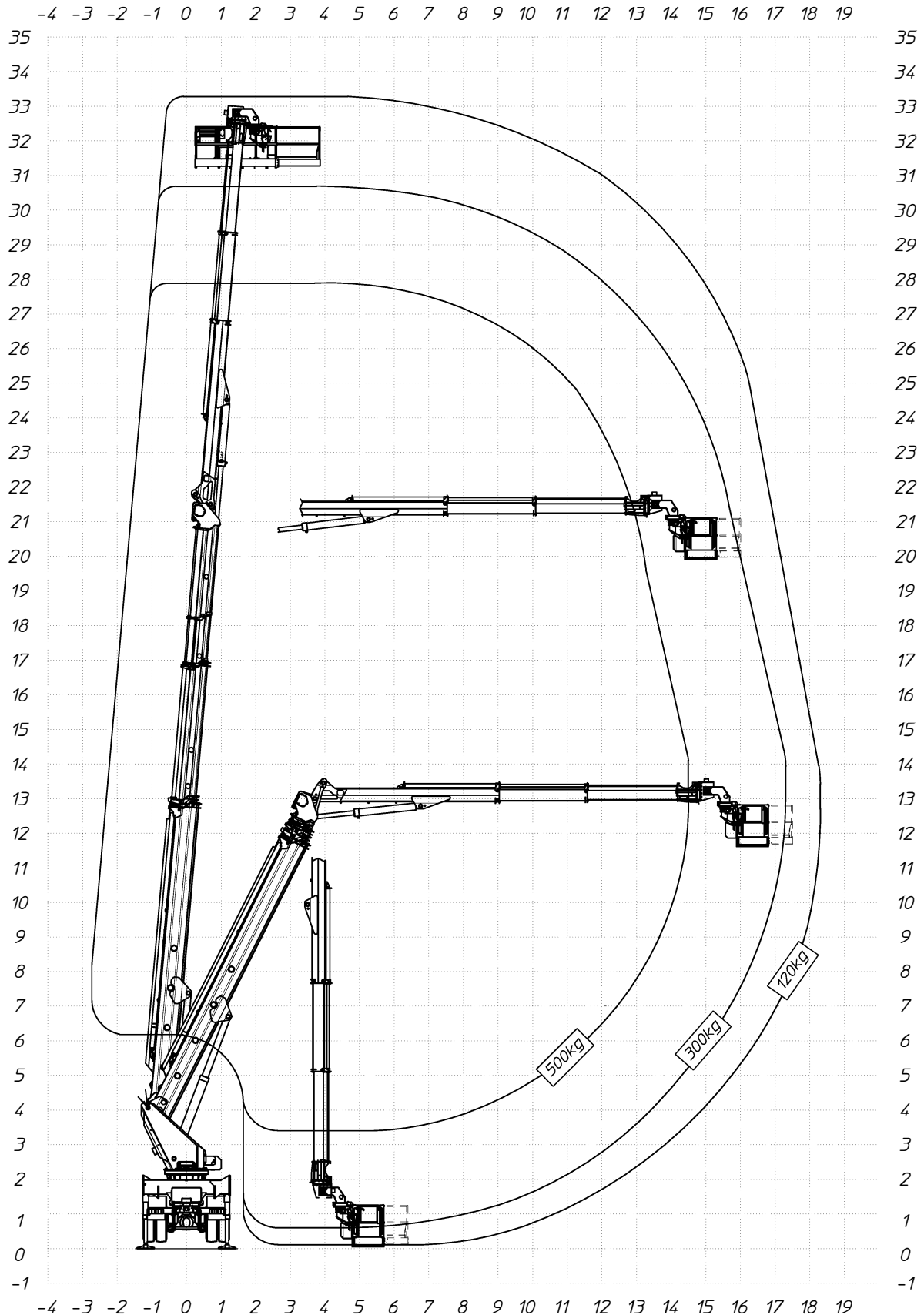
## F.I.M. NOLEGGI

D63019

P.T.T.=32000 kg  
 G.V.W.=32000 kg  
 P.T.A.C.=32000 kg  
 GES. GEWICHT=32000 kg

STABILIZZATORI IN SAGOMA  
 STRAIGHT LINE STABILIZERS  
 STABILISATEURS EN GABARIT  
 STÜTZEN INNERHALB DER FAHRZEUGBREITE

	120Kg	300Kg	500Kg
SBRACCIO DI LAVORO	18.3 m ±5%	17.3 m ±5%	14.5 m ±5%
WORKING OUTREACH	18.3 m ±5%	17.3 m ±5%	14.5 m ±5%
DEPORT DE TRAVAIL	18.3 m ±5%	17.3 m ±5%	14.5 m ±5%
SEITLICHE REICHWEITE	18.3 m ±5%	17.3 m ±5%	14.5 m ±5%



# MULTITEL MJ450

- versione cesto CON PARAPETTO ABBATTIBILE -

## F.I.M. NOLEGGI

Ente	Rev.	Descrizione	Data	Dis.	Contr.	Ap.AQ
MRK	0	EMISSIONE	06/07/18	R.F.		
DIAGRAMMA - SCHEDA 54/2 - Rev. 0 - 15/12/00						

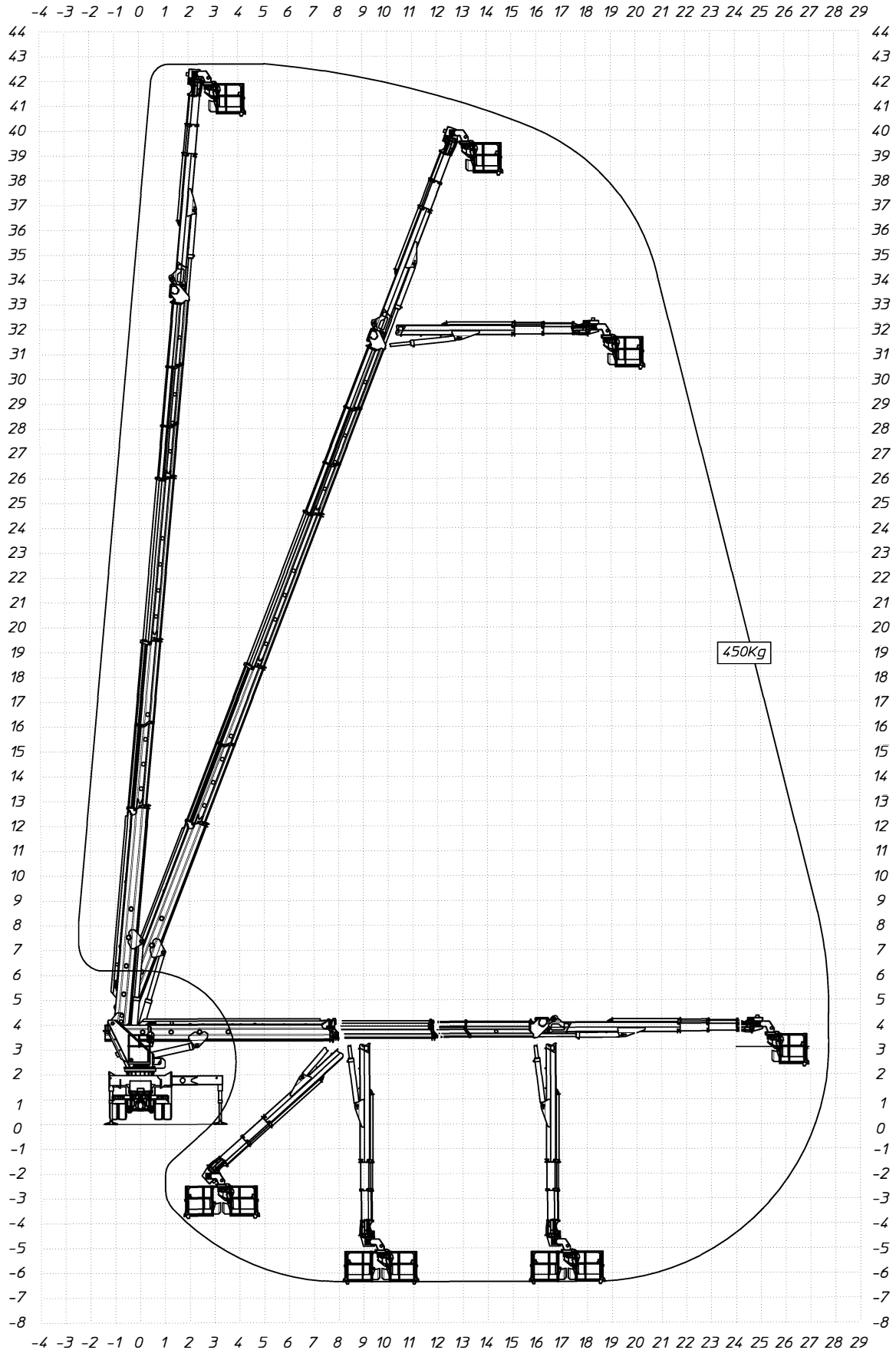
D63010

450Kg

P.T.T.=32000 kg  
 G.V.W.=32000 kg  
 P.T.A.C.=32000 kg  
 GES. GEWICHT=32000 kg

STABILIZZATORI COMPLETAMENTE ESTESI  
 FULLY EXTENDED STABILIZERS  
 STABILISATEURS COMPLETEMENT ETENDUS  
 GANZ AUSGEFAHRENE STÜTZEN

SBRACCIO DI LAVORO 27,7 m ±5%  
 WORKING OUTREACH 27,7 m ±5%  
 DEPORT DE TRAVAIL 27,7 m ±5%  
 SEITLICHE REICHWEITE 27,7 m ±5%



# MULTITEL MJ450

Ente	Rev.	Descrizione	Data	Dis.	Contr.	Ap.AQ
MRK	0	EMISSIONE	06/04/18	R.F.		
DIAGRAMMA - SCHEDA 54/2 - Rev. 0 - 15/12/00						

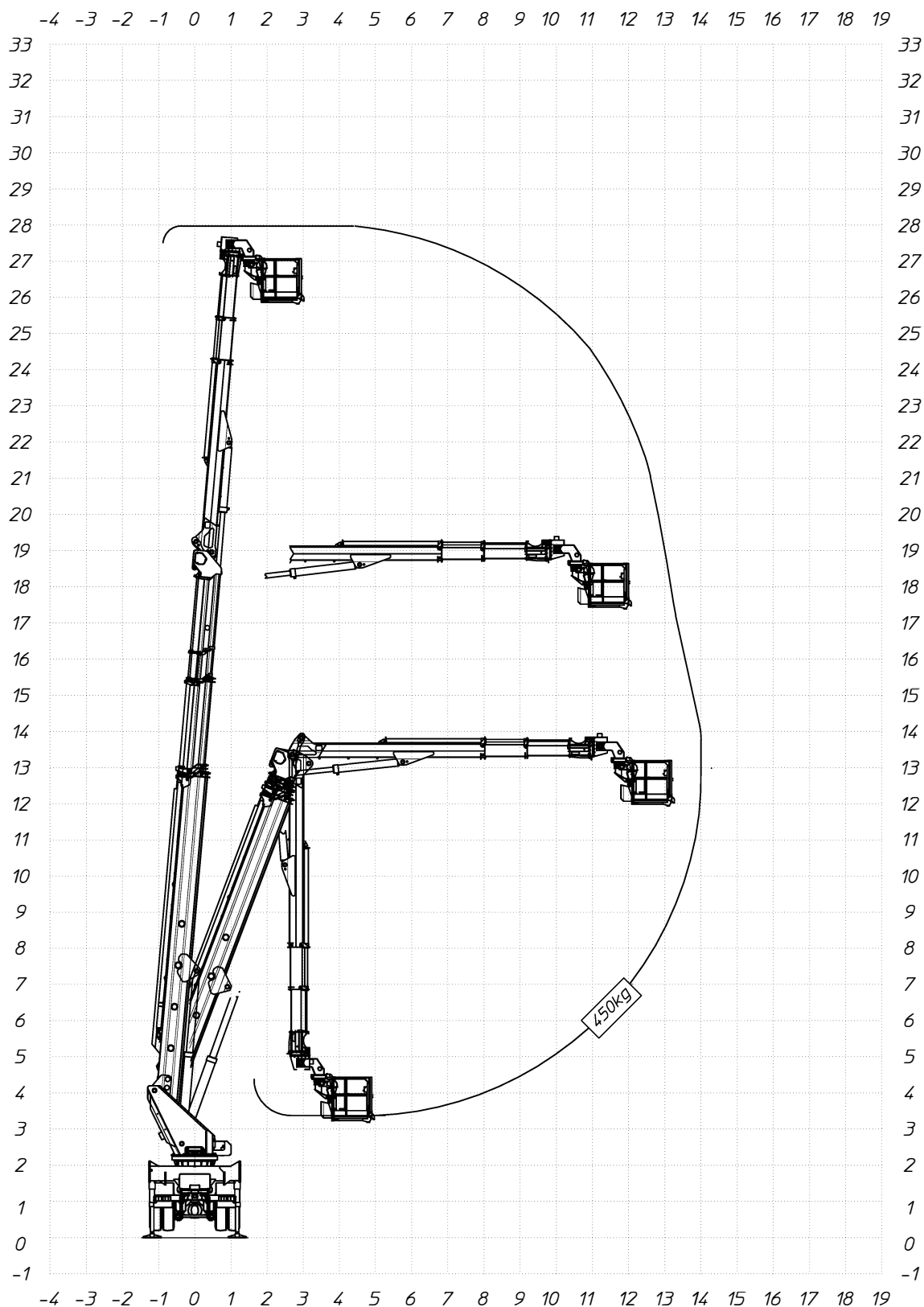
- versione cesto CON PARAPETTO ABBATTIBILE -

D63018

## F.I.M. NOLEGGI

P.T.T.=32000 kg      STABILIZZATORI IN SAGOMA  
 G.V.W.=32000 kg      STRAIGHT LINE STABILIZERS  
 P.T.A.C.=32000 kg      STABILISATEURS EN GABARIT  
 GES. GEWICHT=32000 kg      STÜTZEN INNERHALB DER FAHRZUGBREITE

**450Kg**  
 SBRACCIO DI LAVORO 14 m ±5%  
 WORKING OUTREACH 14 m ±5%  
 DEPORT DE TRAVAIL 14 m ±5%  
 SEITLICHE REICHWEITE 14 m ±5%



# MULTITEL MJ450

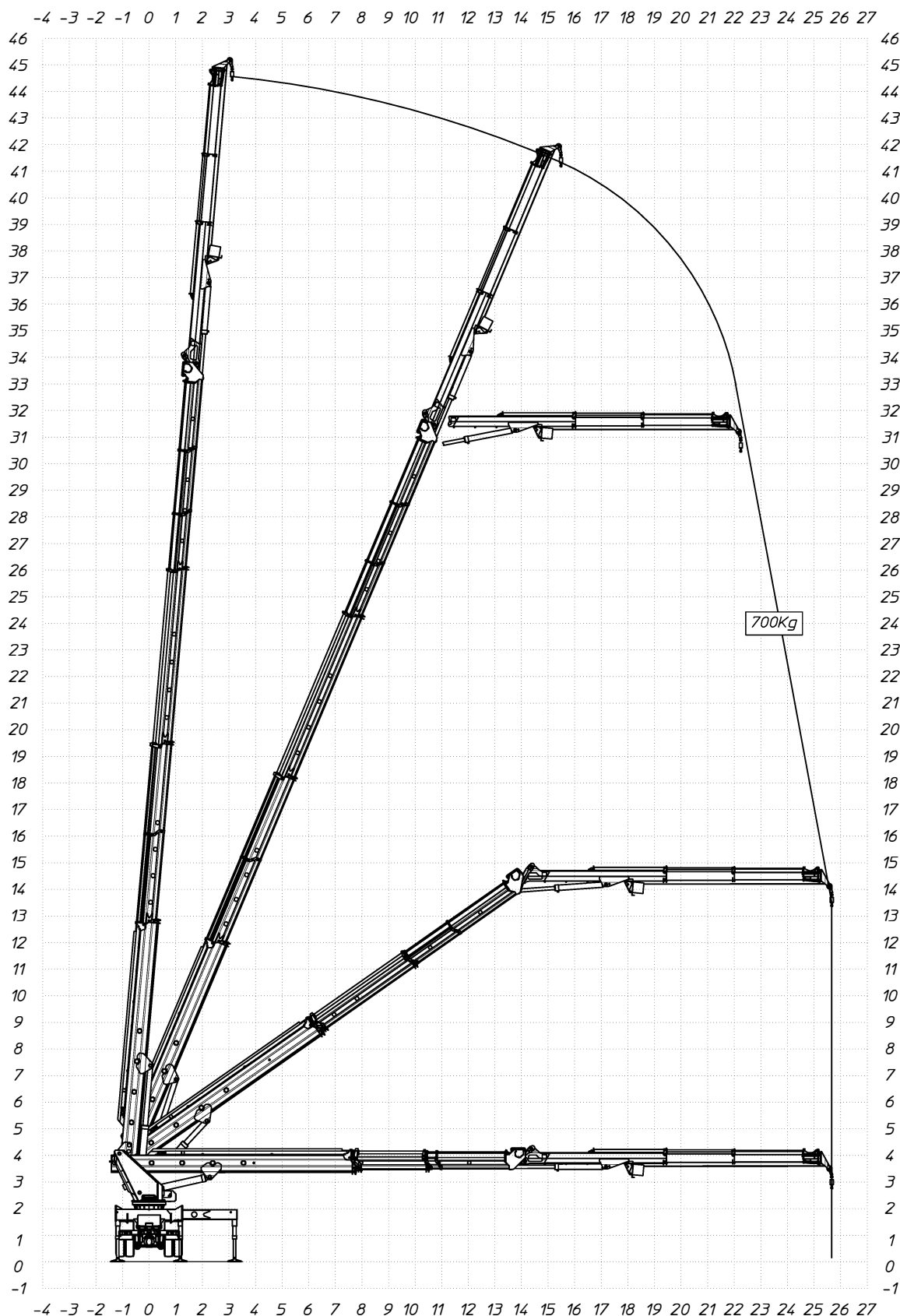
## F.I.M. NOLEGGI

Ente	Rev.	Descrizione	Data	Dis.	Contr.	Ap.AQ
MRK	0	EMISSIONE	09/06/17	L.B.		
DIAGRAMMA - SCHEDA 54/2 - Rev. 0 - 15/12/00						

D60474

700Kg

P.T.T.=32000 kg	STABILIZZATORI COMPLETAMENTE ESTESI	SBRACCIO DI LAVORO	25,6 m ±5%
G.V.W.=32000 kg	FULLY EXTENDED STABILIZERS	WORKING OUTREACH	25,6 m ±5%
P.T.A.C.=32000 kg	STABILISATEURS COMPLETEMENT ETENDUS	DEPORT DE TRAVAIL	25,6 m ±5%
GES. GEWICHT=32000 kg	GANZ AUSGEFAHRENE STÜTZEN	SEITLICHE REICHWEITE	25,6 m ±5%



# MULTITEL MJ450

**F.I.M. NOLEGGI**

Ente	Rev.	Descrizione	Data	Dis.	Contr.	Ap.AQ
MRK	0	EMISSIONE	25/08/21	F.Z.		
DIAGRAMMA - SCHEDA 54/2 - Rev. 0 - 15/12/00						

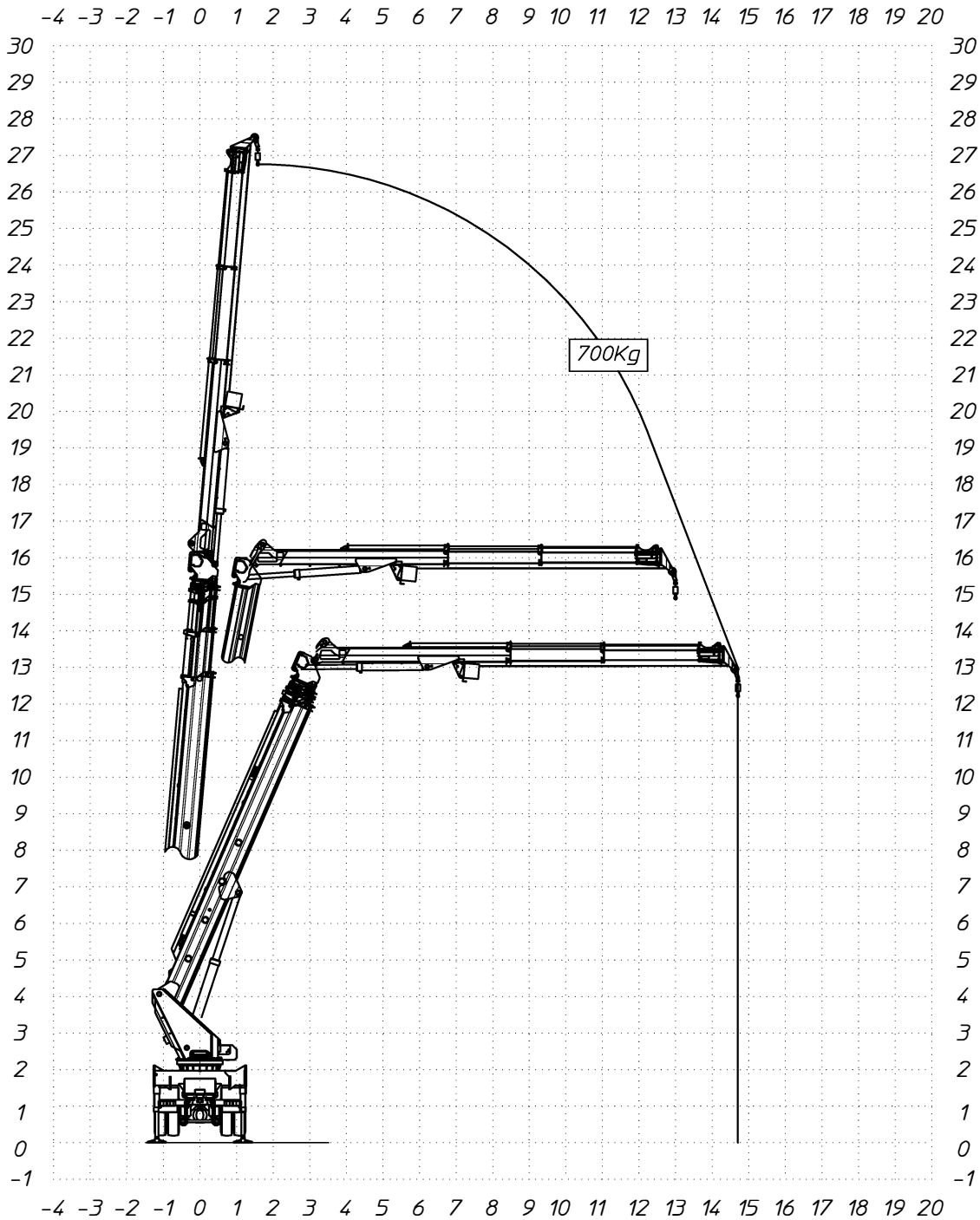
1D79667

P.T.T.=32000 kg  
 G.V.W.=32000 kg  
 P.T.A.C.=32000 kg  
 GES. GEWICHT=32000 kg

STABILIZZATORI IN SAGOMA  
 STRAIGHT LINE STABILIZERS  
 STABILISATEURS EN GABARIT  
 STÜTZEN INNERHALB DER FAHRZEUGBREITE

SBRACCIO DI LAVORO 14.7 m ±5%  
 WORKING OUTREACH 14.7 m ±5%  
 DEPORT DE TRAVAIL 14.7 m ±5%  
 SEITLICHE REICHWEITE 14.7 m ±5%

700kg





# MULTITEL MJ450

**F.I.M. NOLEGGI**

Ente	Rev.	Descrizione	Data	Dis.	Contr.	Ap.AQ
MRK	0	EMISSIONE	25/08/21	F.Z.		
DIAGRAMMA - SCHEDA 54/2 - Rev. 0 - 15/12/00						

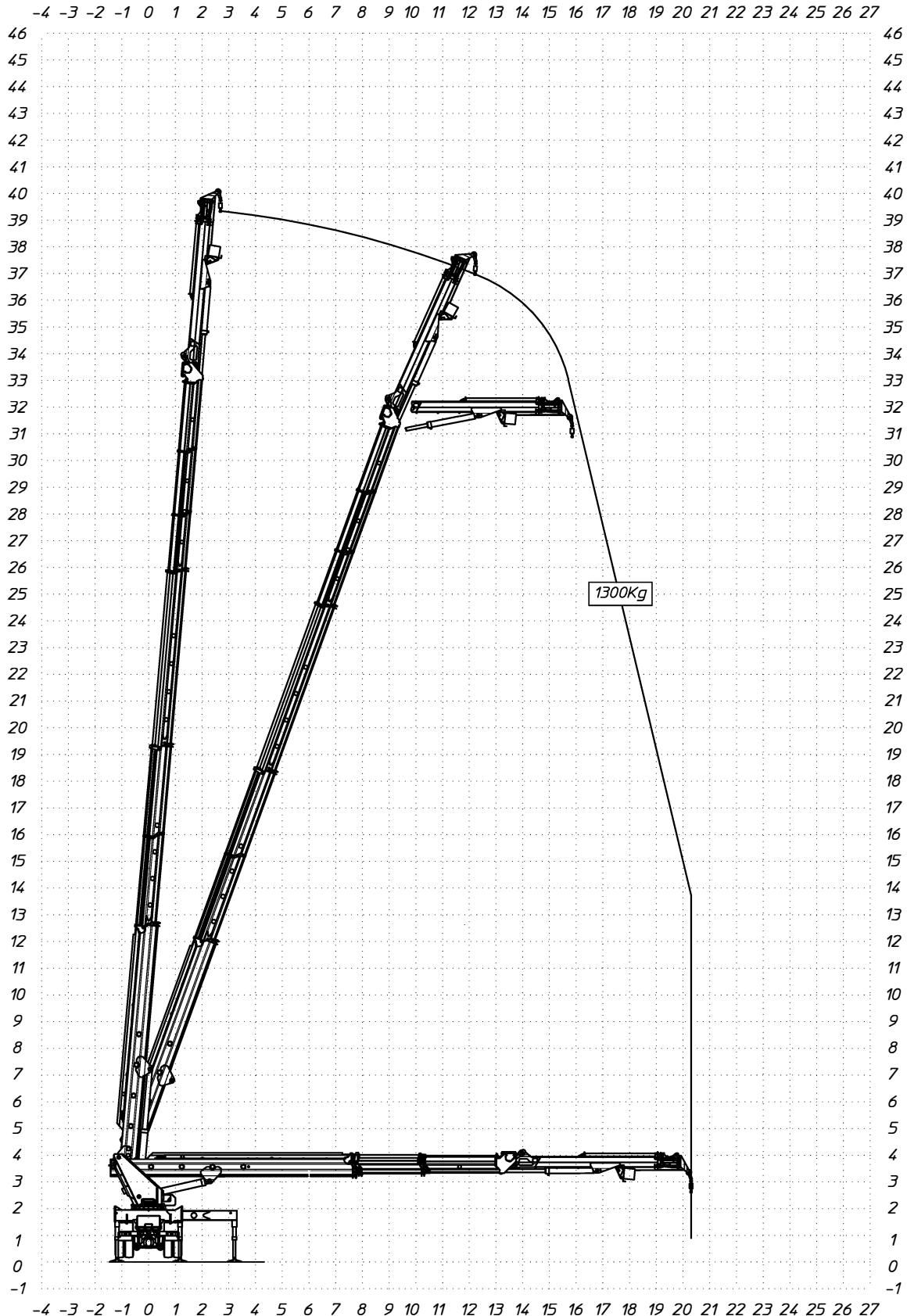
1D79668

1300Kg

P.T.T.=32000 kg  
 G.V.W.=32000 kg  
 P.T.A.C.=32000 kg  
 GES. GEWICHT=32000 kg

STABILIZZATORI COMPLETAMENTE ESTESI  
 FULLY EXTENDED STABILIZERS  
 STABILISATEURS COMPLETEMENT ETENDUS  
 GANZ AUSGEFAHRENE STÜTZEN

SBRACCIO DI LAVORO 20,3 m ±5%  
 WORKING OUTREACH 20,3 m ±5%  
 DEPORT DE TRAVAIL 20,3 m ±5%  
 SEITLICHE REICHWEITE 20,3 m ±5%



# MULTITEL MJ450

Ente	Rev.	Descrizione	Data	Dis.	Contr.	Ap.AQ
MRK	0	EMISSIONE	26/08/21	F.Z.		
DIAGRAMMA - SCHEDA 54/2 - Rev. 0 - 15/12/00						

## F.I.M. NOLEGGI

1D79668

P.T.T.=32000 kg  
 G.V.W.=32000 kg  
 P.T.A.C.=32000 kg  
 GES. GEWICHT=32000 kg

STABILIZZATORI PARZIALMENTE ESTESI (1000 mm)  
 PARTIALLY EXTENDED STABILIZERS (1000 mm)  
 STABILISATEURS ETENDUS PARTIELLEMENT (1000 mm)  
 PARTIAL AUSGEFAHRENE STÜTZEN (1000 mm)

SBRACCIO DI LAVORO 14.2 m ±5%  
 WORKING OUTREACH 14.2 m ±5%  
 DEPORT DE TRAVAIL 14.2 m ±5%  
 SEITLICHE REICHWEITE 14.2 m ±5%

1300Kg

